

PA 02

- ▶ Incremental rotary encoder with shaft
- ▶ Very robust design
- ▶ Low torque
- ▶ Accessories from page 70

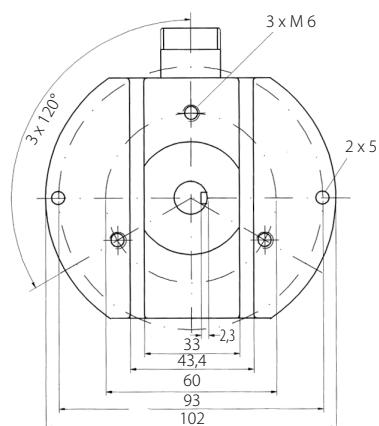
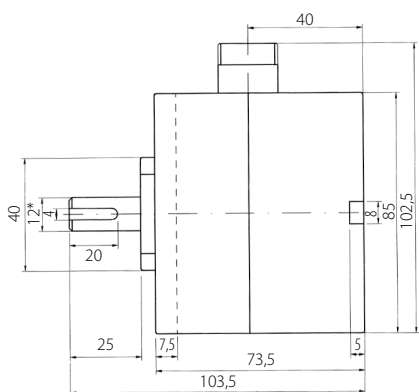
Electrical specifications

max. pulse frequency:	100 kHz
Perm. temperature range:	-30°... +70° C
Power supply:	10V... 30V DC
Max. current consumption:	80 mA (without load)
Max. output load:	30 mA (per channel)
Residual ripple:	max. $\pm 5\% U_B$
Power supply:	5V DC $\pm 5\%$
Max. current consumption:	80 mA

Mechanical specifications

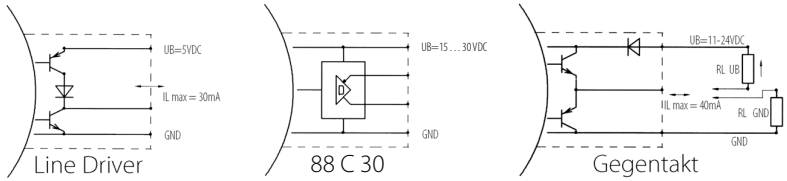
Housing:	Zinc die-casting
Shaft:	stainless steel
Bearing:	Deep groove ball bearing
Weight:	approx. 1.2 kg
Protection type:	IP 54
Max. speed:	6000 U/min
Torque:	approx. 3 Ncm
Max. shaft load:	axial 30 N radial 50 N

Mechanical dimensions



*Tolerance = H 6

Output circuits

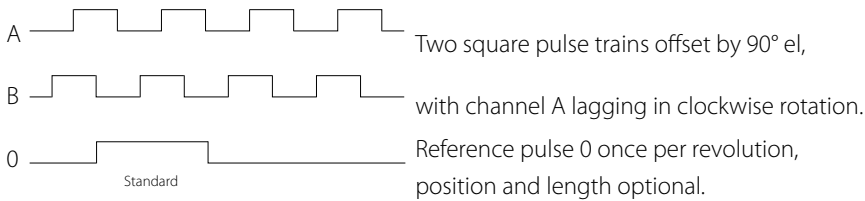


Order ref.: 2

3

5

Signalausgänge



All channels can also be executed inversely.

Pin configuration

	GND	+ U _B	A	B	\bar{A}	\bar{B}	0	$\bar{0}$	\perp
Connection type K (01)	black	blue	brown	beige			yellow		yl/gr
Connection type K (01)	black	blue	brown	beige	yellow	green	pink	purple	yl/gr
Connection type 0 (connector 12)	1	2	3	4	5	6	7	8	11

Order reference

