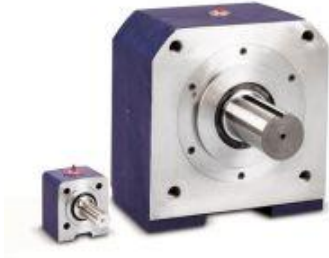


## Overhung Load Adaptors

- [Overview](#)
- [Products Lines](#)



### ZERO- MAX Is A World- Leading Expert In Overhung Load Technology

The first complete line of SAE “A” through SAE “F” mount **overhung load adaptors** was designed by ZERO- MAX. Zero- Max has set the industry standard with the **overhung load adaptor** design. Today, Zero- Max provides immediate shipment of standard models from stock. From the smallest Model 200 SAE “A” mount to the largest Model 1500 SAE “F” mount, **overhung load adaptors** feature rugged cast iron housings, 130,000 PSI stress- proof steel shafts, ball or tapered roller bearings, a variety of shaft options, including spline shafts and attractively painted housings. All models may be either face or foot- mounted. We offer many custom options or we'll create a special design for your application when needed.

### Count On Overhung Load Adaptors For These Important Benefits:

- Eliminates premature motor or pump failure due to overhung loads (axial and radial) on your motor or pump shaft.
- Prevents contamination of hydraulic fluid in harsh environments.
- Provides a solid, permanent mounting surface.
- Permits the removal of hydraulic motors for servicing without disturbing driven gears, pulleys or sprockets.
- Seals out dirt and grime.
- Removes radial loads from hydraulic motors and pumps – technology for the [agriculture, forestry, and road construction](#) markets.

For more information on custom or standard overhung load adaptors with SAE mounts, [contact us](#) or [click here](#) to find your [local sales representative](#)



[Standard Overhung Load Adaptors](#)



[Custom Overhung Load Adaptors](#)