

Swivel Joint • Type DG-02L

DN 125 - DN 700



Instructions

General technical instructions must be observed. Subject to technical alterations and fluctuations caused by the production process.

Number of revolutions for swivel and rotation movements ≤ 10 rpm.

Swivel movements in several planes see catalogue pages 6 and 7.

Sets of sealings and balls available individually as spare parts.

Application

- for liquid or gaseous media at high temperatures and pressures
- for slow swivel and rotation movements through 360°
- for rough operating conditions
 - in hydraulic flow pipes
 - at roll stands
 - in sewage plant
 - in steel mills
 - at hose drums
- for installation in flexible pipeline systems, for conveying media from a fixed point to any required flexible point
 - filling systems
 - loading and swivel arms
 - pipe joint shears
- use at test facilities
- special designs suitable for food products

Dimensions

Standard: DN 125 to DN 700

Flanges: PN 10/16 to DIN 2501

Others: possible to ANSI (ASA), BS etc.

Welding end: to ISO recommendations

Swivel Joint

Structure

- stator (outer part) and rotor (inner part) joined by a two-row ball bearing
- for-life lubrication provided in the factory
- welded connection parts: welding ends, pipe bends or flanges

Materials

basic unit	welding end	flange
1.7225	1.0305	1.0460
1.4571	1.4571	1.4571

Standard sealings

- PTFE compound sealings

Special sealings

- additional inner sealing for heavily polluted media
- hermetic radial sealing for underwater applications (from DN 65)
- medium sealings for oxygen, steam and food products

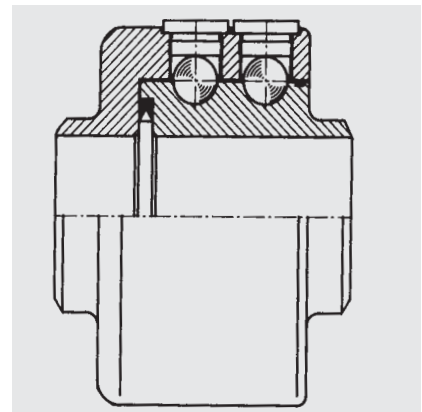
Pressure rating

- PN 10, PN 16 (1.7225) with flanges
- PN 16, PN 40 (1.7225) with welding ends
- PN 10, PN 16 (1.4571) with flanges
- PN 6, PN 16 (1.4571) with welding ends

Surface protection

- Gas nitration
- Corrosion-protection primer

Design

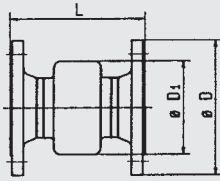


Type DG-02L basic unit
with two-row ball bearing



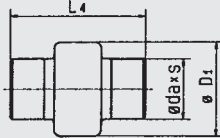
STENFLEX Swivel Joint type DG-02L in cooling water line of exhaust pipe of furnace in a steel mill

Form 11 F / flange connection*



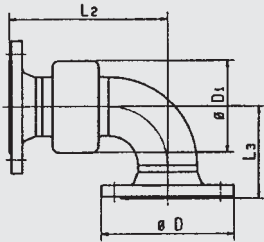
DN	ø D1 mm	1.0460						1.4571					
		PN 10			PN 16			PN 10			PN 16		
		ø D mm	L mm		ø D mm	L mm		ø D mm	L mm		ø D mm	L mm	
125	197	250	241	250	241	250	241	250	241	250	241	250	241
150	223	285	251	285	251	285	251	285	251	285	251	285	251
200	277	340	265	340	265	340	265	340	265	340	265	340	265
250	325	395	277	405	281	395	277	405	281	395	277	405	281
300	390	445	282	460	302	445	282	460	302	445	282	460	302
350	420	505	282	520	310	505	282	520	310	505	282	520	310
400	470	565	290	580	316	565	290	580	316	565	290	580	316
500	590	670	296	715		670	296	715		670	296	715	
600	695	780	311	840		780	311	840		780	311	840	
700	790	895	311	910		895	311	910		895	311	910	

Form 11 S / welding ends



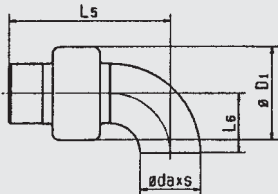
DN	ø D1 mm	ø d _a mm	1.0305						1.4571					
			PN 16			PN 40			PN 6			PN 16		
			s mm	L ₁ mm		s mm	L ₁ mm		s mm	L ₁ mm		s mm	L ₁ mm	
125	197	139,7	4,0	231	4,0	231	4,0	231	4,0	231	4,0	231	4,0	231
150	223	168,3	4,5	241	4,5	241	4,5	241	4,5	241	4,5	241	4,5	241
200	277	219,1	5,9	241	5,9	241	5,9	241	5,9	241	5,9	241	5,9	241
250	325	273,0	6,3	241	6,3	241	6,3	241	6,3	241	6,3	241	6,3	241
300	390	323,9	7,1	246	7,1	246	7,1	246	7,1	246	7,1	246	7,1	246
350	420	355,6	8,0	296			8,0	296			8,0	296		
400	470	406,4	6,3	296			6,3	296			6,3	296		
500	590	508,0	6,3	296			6,3	296			6,3	296		
600	695	609,6	6,3	301			6,3	301			6,3	301		
700	790	711,2	7,1	301			7,1	301			7,1	301		

Form 12 F / flange connection*



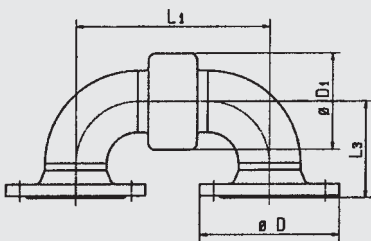
DN	ø D1 mm	1.0460						1.4571					
		PN 10			PN 16			PN 10			PN 16		
		ø D mm	L ₂ mm	L ₃ mm	ø D mm	L ₂ mm	L ₃ mm	ø D mm	L ₂ mm	L ₃ mm	ø D mm	L ₂ mm	L ₃ mm
125	197	250	376	248	250	376	248	250	376	248	250	376	248
150	223	285	425	287	285	425	287	285	425	287	285	425	287
200	277	340	508	370	340	508	370	340	508	370	340	508	370
250	325	395	590	452	405	592	454	395	590	452	405	592	454
300	390	445	671	528	460	681	538	445	671	528	460	681	538
350	420	505	747	604	520	761	618	505	747	604	520	761	618
400	470	565	828	685	580	841	698	565	828	685	580	841	698
500	590	670	983	840				670	983	840			
600	695	780	1145	997				780	1145	997			
700	790	895	1298	1150				895	1298	1150			

Form 12 S / welding ends



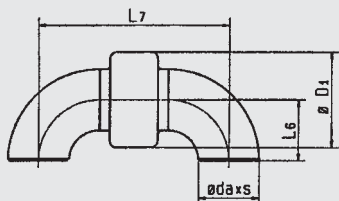
DN	ø D1 mm	ø d _a mm	1.0305						1.4571					
			PN 16			PN 40			PN 6			PN 16		
			s mm	L ₅ mm	L ₆ mm	s mm	L ₅ mm	L ₆ mm	s mm	L ₅ mm	L ₆ mm	s mm	L ₅ mm	L ₆ mm
125	197	139,7	4,0	371	190	4,0	371	190	4,0	371	190	4,0	371	190
150	223	168,3	4,5	420	229	4,5	420	229	4,5	420	229	4,5	420	229
200	277	219,1	5,9	496	305	5,9	496	305	5,9	496	305	5,9	496	305
250	325	273,0	6,3	572	381	6,3	572	381	6,3	572	381	6,3	572	381
300	390	323,9	7,1	653	457	7,1	653	457	7,1	653	457	7,1	653	457
350	420	355,6	8,0	754	533			8,0	754	533				
400	470	406,4	6,3	831	610			6,3	831	610				
500	590	508,0	6,3	983	762			6,3	983	762				
600	695	609,6	6,3	1140	914			6,3	1140	914				
700	790	711,2	7,1	1293	1067			7,1	1293	1067				

Form 13 F / flange connection*



DN	ø D1 mm	1.0460						1.4571					
		PN 10			PN 16			PN 10			PN 16		
		ø D mm	L ₁ mm	L ₃ mm	ø D mm	L ₁ mm	L ₃ mm	ø D mm	L ₁ mm	L ₃ mm	ø D mm	L ₁ mm	L ₃ mm
125	197	250	511	248	250	511	248	250	511	248	250	511	248
150	223	285	599	287	285	599	287	285	599	287	285	599	287
200	277	340	751	370	340	751	370	340	751	370	340	751	370
250	325	395	903	452	405	903	454	395	903	452	405	903	454
300	390	445	1060	528	460	1060	538	445	1060	528	460	1060	538
350	420	505	1212	604	520	1212	618	505	1212	604	520	1212	618
400	470	565	1366	685	580	1366	698	565	1366	685	580	1366	698
500	590	670	1670	840				670	1670	840			
600	695	780	1979	997				780	1979	997			
700	790	895	2285	1150				895	2285	1150			

Form 13 S / welding ends



DN	ø D1 mm	ø d _a mm	1.0305						1.4571					
			PN 16			PN 40			PN 6			PN 16		
			s mm	L ₆ mm	L ₇ mm	s mm	L ₆ mm	L ₇ mm	s mm	L ₆ mm	L ₇ mm	s mm	L ₆ mm	L ₇ mm
125	197	139,7	4,0	190	511	4,0	190	511	4,0	190	511	4,0	190	511
150	223	168,3	4,5	229	599	4,5	229	599	4,5	229	599	4,5	229	599
200	277	219,1	5,9	305	751	5,9	305	751	5,9	305	751	5,9	305	751
250	325	273,0	6,3	381	903	6,3	381	903	6,3	381	903	6,3	381	903
300	390	323,9	7,1	457	1060	7,1	457	1060	7,1	457	1060	7,1	457	1060
350	420	355,6	8,0	533	1212			8,0	533	1212				
400	470	406,4	6,3	610	1366			6,3	610	1366				
500	590	508,0	6,3	762	1670			6,3	762	1670				
600	695	609,6	6,3	914	1979			6,3	914	1979				
700	790	711,2	7,1	1067	2285			7,1	1067	2285				

*PN 40 flange connection possible on request.
Materials data stated for basic units.